









Panel Meter

Prices see shop.griederbauteile.ch

61 x 47mm and 71 x 61mm	Page 1			
42 x 42mm – Analog	Page 2			
60 x 45mm – Analog	Page 2			
85 x 64mm – Analog	Page 3			
86 x 64mm – Analog	Page 3			
110 x 82.5mm – Analog	Page 3			
Profil Panel Mount – Digital	Page 4			
Panel Mount – Digital	Page 4			

61 x 47mm

Order No	Measuring	Measuring Range
WMM.A8	Ampere (AC)	800mA
WMM.1A		1A




71 x 61mm


Order No	Measuring	Measuring Range
WMM.5A	Ampere (AC)	5A
WMM.10A		10A

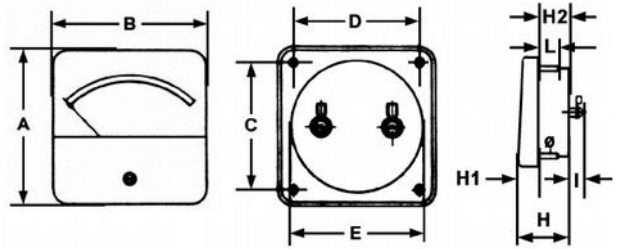


Vintage components are only available as stock lasts.


Analog Panel Meter

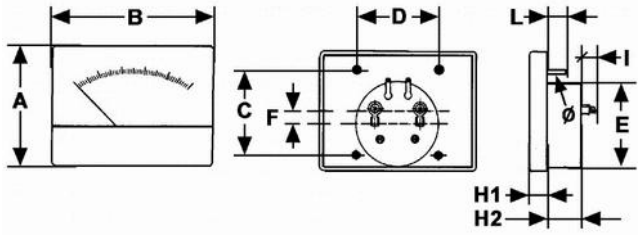
42 x 42mm 

Order No	Measuring	Measuring Range	Internal Resistance																									
WMI.+/-50UA	Ampere (DC)	50-0-50µA	1000Ω	Moving coil panel meter Calibrating mechanically Removable acrylic glass																								
WMI.50UA		50µA	2000Ω																									
WMI.100UA		100µA	2000Ω																									
WMI.500UA		500µA	660Ω																									
WMI.1mA		1mA	100Ω																									
WMI.10mA		10mA	6.0Ω																									
WMI.100mA		100mA	0.6Ω																									
WMI.500mA		500mA	0.13Ω																									
WMI.1A		1A	0.06Ω																									
WMI.3A		3A	0.03Ω																									
WMI.5A	5A	0.02Ω																										
WMI.10A	10A	0.01Ω																										
WMI.15A	15A	0.006Ω																										
WMI.10V	Voltage (DC)	10V	10kΩ																									
WMI.15V		15V	15kΩ																									
WMI.30V		30V	30kΩ																									
WMI.50V		50V	50kΩ																									
WMI.100V		100V	100kΩ																									
WMI.300V	300V	300kΩ																										
WMI.15VAC	Voltage (AC)	15V	15kΩ	<table border="1"> <tr> <td>A</td> <td>42mm</td> <td>H1</td> <td>9mm</td> </tr> <tr> <td>B</td> <td>42mm</td> <td>H2</td> <td>23mm</td> </tr> <tr> <td>C</td> <td>32mm</td> <td>I</td> <td>5mm</td> </tr> <tr> <td>D</td> <td>32mm</td> <td>L</td> <td>13mm</td> </tr> <tr> <td>E</td> <td>38mm</td> <td>Ø</td> <td>2.3mm</td> </tr> <tr> <td>H</td> <td>32mm</td> <td></td> <td></td> </tr> </table>	A	42mm	H1	9mm	B	42mm	H2	23mm	C	32mm	I	5mm	D	32mm	L	13mm	E	38mm	Ø	2.3mm	H	32mm		
A		42mm	H1		9mm																							
B		42mm	H2		23mm																							
C		32mm	I		5mm																							
D		32mm	L		13mm																							
E	38mm	Ø	2.3mm																									
H	32mm																											
WMI.30VAC	30V	30kΩ																										
WMI.50VAC	50V	50kΩ																										
WMI.100VAC	100V	100kΩ																										
WMI.300VAC	300V	300kΩ																										


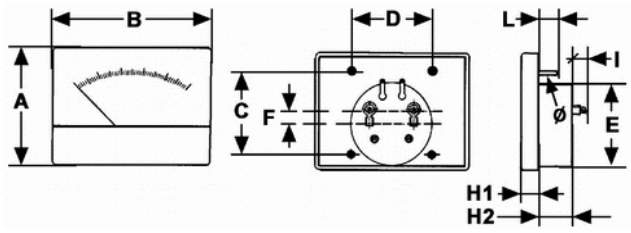


60 x 45mm 

Order No	Measuring	Measuring Range	Internal Resistance																									
WMF.+/-50UA	Ampere (DC)	50-0-50µA	1000Ω	Moving coil panel meter Calibration mechanically Cover grey, removable without affecting calibration																								
WMF.+/-100UA		100-0-100µA	1000Ω																									
WMF.50UA		50µA	1000Ω																									
WMF.100UA		100µA	1000Ω																									
WMF.500UA		500µA	100Ω																									
WMF.1mA		1mA	180Ω																									
WMF.10mA		10mA	6.0Ω																									
WMF.100mA		100mA	0.6Ω																									
WMF.500mA		500mA	0.2Ω																									
WMF.1A		1A	0.08Ω																									
WMF.3A		3A	0.03Ω																									
WMF.5A		5A	0.02Ω																									
WMF.10A		10A	0.01Ω																									
WMF.15A		15A	0.006Ω																									
WMF.25A		125A	0.004Ω																									
WMF.VU	VU-Meter 200µA	600Ω																										
WMF.10V	Volt (DC)	10V	10kΩ																									
WMF.15V		15V	15kΩ																									
WMF.30V		30V	30kΩ																									
WMF.50V		50V	50kΩ																									
WMF.100V		100V	100kΩ																									
WMF.300V	300V	300kΩ																										
WMF.15VAC	Volt (AC)	15V	15kΩ	<table border="1"> <tr> <td>A</td> <td>46mm</td> <td>H1</td> <td>10mm</td> </tr> <tr> <td>B</td> <td>59.5mm</td> <td>H2</td> <td>23.5mm</td> </tr> <tr> <td>C</td> <td>32mm</td> <td>I</td> <td>7mm</td> </tr> <tr> <td>D</td> <td>32mm</td> <td>L</td> <td>10mm</td> </tr> <tr> <td>E</td> <td>37.5mm</td> <td>Ø</td> <td>3mm</td> </tr> <tr> <td>F</td> <td>2mm</td> <td></td> <td></td> </tr> </table>	A	46mm	H1	10mm	B	59.5mm	H2	23.5mm	C	32mm	I	7mm	D	32mm	L	10mm	E	37.5mm	Ø	3mm	F	2mm		
A		46mm	H1		10mm																							
B		59.5mm	H2		23.5mm																							
C		32mm	I		7mm																							
D		32mm	L		10mm																							
E	37.5mm	Ø	3mm																									
F	2mm																											
WMF.30VAC	30V	30kΩ																										
WMF.50VAC	50V	50kΩ																										
WMF.100VAC	100V	100kΩ																										
WMF.300VAC	300V	300kΩ																										

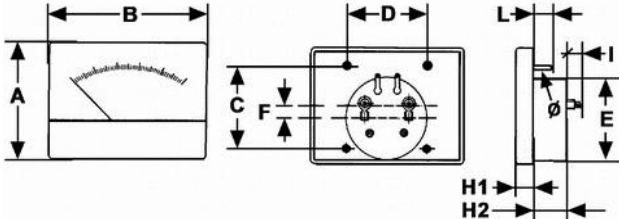


86 x 64mm

Order No	Measuring	Measure Range	Internal Resistance	
WMG. +/-50µA	Ampere (DC)	50-0-50µA	1000Ω	Moving coil panel meter Calibration mechanically Cover grey, removable without affecting calibration
WMG. +/-100µA		100-0-100µA	1000Ω	
WMG. 50µA		50µA	1000Ω	
WMG. 100µA		100µA	1000Ω	
WMG. 200µA		200µA		
WMG. 500µA		500µA	100Ω	
WMG. 1mA		1mA	180Ω	
WMG. 10mA		10mA	6.0Ω	
WMG. 100mA		100mA	0.6Ω	
WMG. 500mA		500mA	0.2Ω	
WMG. 1A		1A	0.08Ω	
WMG. 3A		3A	0.03Ω	
WMG. 5A		5A	0.02Ω	
WMG. 10A		10A	0.01Ω	
WMG. 15A		15A	0.006Ω	
WMG. SM		S-Meter 100µA	1200Ω	
WMG. 10V	Voltage (DC)	10V	10kΩ	
WMG. 15V		15V	15kΩ	
WMG. 25V		25V	25kΩ	
WMG. 30V		30V	30kΩ	
WMG. 50V		50V	50kΩ	
WMG. 100V	Voltage (AC)	100V	100kΩ	
WMG. 300V		300V	300kΩ	
WMG. 15VAC		15V	15kΩ	
WMG. 30VAC		30V	30kΩ	
WMG. 50VAC	50V	50kΩ		
WMG. 100VAC	100V	100kΩ		

A	63.5mm	H1	10.5mm
B	85mm	H2	23mm
C	45mm	I	7mm
D	45mm	L	10mm
E	45mm	Ø	3mm
F	3mm		

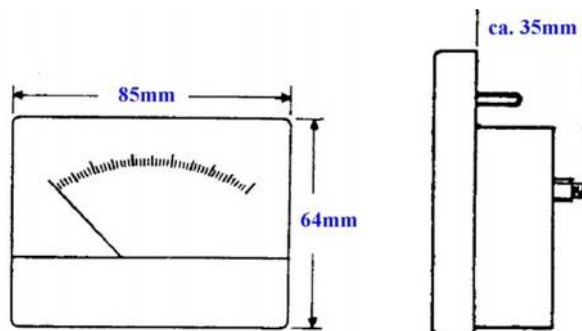
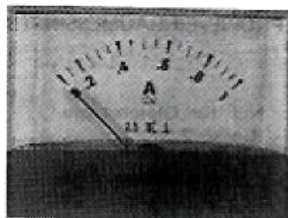
110 x 82.5mm

Order No	Measuring	Measuring Range	Internal Resistance	
WMH. +/-50µA	Ampere (DC)	50-0-50µA	1200Ω	Moving coil panel meter Calibration mechanically Cover grey, removable without affecting calibration
WMH. +/-100µA		100-0-100µA	600Ω	
WMH. 500µA		500µA	240Ω	
WMH. 1mA		1mA	120Ω	
WMH. 10mA		10mA	6.0Ω	
WMH. 50mA		50mA	0.9Ω	
WMH. 100mA		100mA	0.6Ω	
WMH. 1A		1A	0.08Ω	
WMH. 3A		3A	0.03Ω	
WMH. 10V		Voltage (DC)	10V	
WMH. 15V	15V		15kΩ	
WMH. 25V	25V		25kΩ	
WMH. 30V	30V		30kΩ	
WMH. 50V	50V		50kΩ	
WMH. 100V	Voltage (AC)	100V	100kΩ	
WMH. 300V		300V	300kΩ	
WME.110		Installation frame fits WMH.xxx panel meter		

A	82.5mm	H1	12.5mm
B	110mm	H2	23.5mm
C	58mm	I	9mm
D	58mm	L	11mm
E	58mm	Ø	3mm
F	8mm		

85 x 64mm

Order No	Measuring	Measuring Range
WMN. 1A	Ampere (DC)	1A
WMN. 15V	Volt (DC)	15V
WMN. 30V		30V



Profile Panel Meter 1 – 6 Illuminated

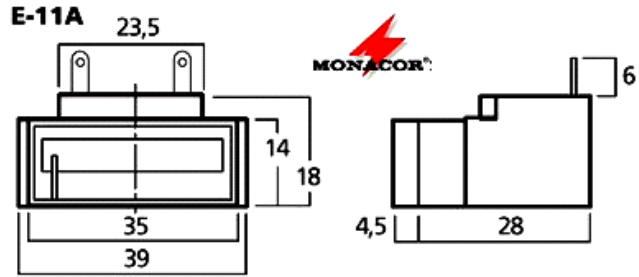


For tuning and level display

Order No	Scale	Current	Internal Resistance
WMB.703	1 – 6	120µA	750Ω



Design: illuminated
Make: Monacor
Type: E-11A E11A



Digital Panel Mount Meters

LED Voltage Module Modell DPM45



Order No
WME.45



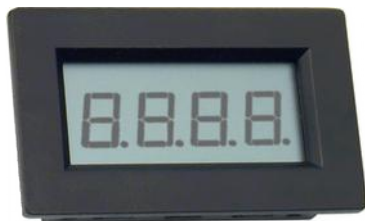
DC voltage up to 199.9mV (Condition at delivery)
Extension of measuring range to 1.999, 19.99, 199.9 500V is possible with added shunt resistors
DC current with shunt resistor 0.2mA, 2mA, 20mA, 200mA, 2000mA
With snap-in frame.

Digit height: LED 14mm
Display: 3 ½ -digit with decimal point
Scale end value: ±199
Accuracy: ±0.5%
Sequence: 2 - 3 x per second
Operating temperature: 0°C to +50°C
Power supply: (9V): 7VDC - 12VDC
Input impedance: 100M-Ohm
Background illumination: no
Dimensions: H=49.5mm W=83mm T=22mm

LCD Panel Meter Modell DPM40



Order No
WME.40



Digit height: LED 13mm
Measuring input voltage: max. 199,9 mV
Sequence: 2-3 x per second
Input resistance: > 100 Mohm
Accuracy: ±0.5%
H=40.5mm W=68.5mm T=18mm